



Concept and artistic direction Anna Raimondo  
 Interviews, recordings, editing and realization Anna Raimondo  
 Editing of the Flemish stories with Ruby Bernabeu-Plous  
 Additional recordings Flavien Gillié, Anne Lepère  
 Sound mixing Flavien Gillié  
 Graphics and illustration Marzia Dalfini  
 Jingle music David Chazam  
 Jingle voices Ruby Bernabeu-Plous, Loes Jacobs, Anna Raimondo  
 Creation of the marble tiles Mosaici Moruzzi  
 Head of production and communications Dounia Mojahid  
 Production Moussem Nomadic Arts Centre  
 with contribution from nadine, Sveva Uentre, Romane Beau, Yanis Stefanou  
 Translation in Dutch Loes Jacobs  
 Translation in English Sarah Cale

**Q (ee) R Codes - New Boundaries BXL 1000** is part of a long-term nomadic art project initiated by artist Anna Raimondo in 2017. In Brussels, following the BXL Universel II - Multiplcity project at the Centrale for contemporary art in 2021, the project will be continued from 2025 to 2030, thanks to a commission from the City of Brussels and the alliance of several people and institutional and associative partners.

The project questions the experiences of women, trans, queer and non-binary people in their cities. Coming from a variety of geographical, cultural, generational, social and sexual backgrounds, the people the artist met were invited to take part in discussions and audio interviews with her. They recount and describe the spaces in the centre of Brussels that are most significant to them, sharing the sensations produced by these places, their stories, their memories and the projections that nourish them.

Through listening and oral research on the one hand, and the creation of new spaces for imagination, confrontation and dialogue on the other, **Q (ee) R Codes - New Boundaries BXL 1000** is intended to be a platform for reflection to tell and reimagine the place of women - understood in a broad, non-biological sense - and gender minorities in public space.

The result is the production of 10 sound portraits, scattered around the city centre of Brussels, the locations of which are shown on the front of this map. In each location, you'll find a QR code, appearing as a marble mosaic, that will allow you to listen to each audio.

The title, **Q (ee) R Codes**, intentionally omits the letter 'u' from the word 'queer' to escape grammar and its norms, while its pronunciation indicates the tool for listening to the sounds.

**Q (ee) R Codes** also evokes the gestures that have emerged during certain encounters. These are hand gestures that resist a fixed codification and which, in their particularity and the context in which they are received, open up a wealth of symbolism. They are reproduced in five of the ten locations.

The project thus offers a map of Brussels 1000 mediated by voices, bodies and subjectivities intended as a call to listen, and as a moment of potential empathy with the voice we hear.

## ACCESSIBILITY INFORMATION

Locations are listed from North to South.

📍 Rue des Commerçants 23

🚇 Metro 2 - 6 Yser, exit 3 Porte d'Anvers

♿ Wheelchair accessibility with assistance

📍 Quai aux Barques 1

🚇 Metro 1 - 5 Sainte-Catherine, exit 1 Quai aux Briques

♿ Wheelchair accessibility with assistance

📍 Putterie 21

🚇 Metro 1 - 5 Gare Centrale, exit 6 Putterie

♿ Wheelchair accessibility with assistance

📍 Rue de la Madeleine 55

🚇 Metro 1 - 5 Gare Centrale, exit Square de la Putterie

♿ Wheelchair accessibility with assistance

Galerie Bortier is open from 9am to 10:30pm, Tuesday to Saturday and from 9am to 6:30pm on Sunday.

⚠️ The gallery is not wheelchair accessible

📍 Rue du Midi 144

🚊 Tram 4 - 10 Anneessens, exit 8 Maurice Lemonnier

⚠️ No wheelchair accessibility

📍 Rue Philippe de Champagne 5

🚊 Tram 4 - 10 Anneessens, exit 1 Place Anneessens

⚠️ No wheelchair accessibility

📍 Skatepark, rue de la Chapelle

🚊 Tram 92 - 93 Petit Sablon

🚊 Tram 4 - 10 Anneessens, exit 8 Boulevard Maurice Lemonnier

⚠️ No wheelchair accessibility

📍 Boulevard Maurice Lemonnier 216

🚊 Tram 4 - 10 - 82 Lemonnier, exit 1 Boulevard Maurice Lemonnier

⚠️ No wheelchair accessibility

📍 Place du Trône 9/1

In front of the statue of Léopold II

🚇 Metro 2 - 6 Trône, exit 1 Rue du Luxembourg

♿ Wheelchair accessibility with assistance

📍 Place Poelaert

In front of the Belgian Infantry Memorial

🚊 Tram 8 - 92 - 93 Poelaert

♿ Wheelchair accessibility with assistance



Q (ee) R  
 Codes  
 Nouvelles Frontières / Nieuwe Grenzen / New Boundaries  
 BXL



HOW DOES PUBLIC SPACE IN BRUSSELS REFLECT OUR GENDER-SPECIFIC ASSIGNATIONS AND POSITIONS?

UNDER WHAT CONDITIONS AND FOR WHAT REASONS IS A SPACE PERCEIVED AS SAFE OR HOSTILE FOR WOMEN, TRANS, QUEER AND NON-BINARY PEOPLE?

BETWEEN STRATEGIES OF VISIBILITY AND INVISIBILITY, WHAT ARE OUR DAILY GESTURES OF RESISTANCE AND EMANCIPATION IN THE STREET AND WITH OTHERS? AND OUR QUEER GESTURES?

IS BRUSSELS A QUEER CITY?



A participatory sound art project for Brussels' public space, initiated by Anna Raimondo with the voices of Gaia, Ophélie Mac Coco, Agathe Yamina, Laura Nsengiyumva, Aïda Yancy, L.K. Quinn, Anniek Schaliij, Marian Lens, Ansaio Totolehibe. With the support of Anais Maes, Alderwoman for Urban Planning and the College of Mayor, Aldermen and Alderwomen of the City of Brussels.

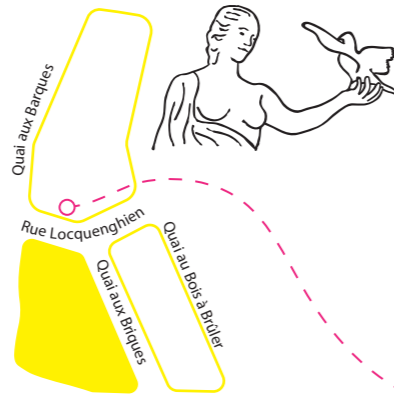
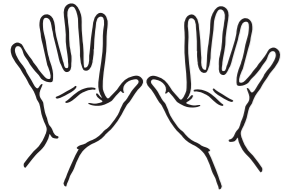
BIP  
 BIP



QUAI AUX BARQUES 1  
IN FRONT OF THE  
MONUMENT TO THE  
PIGEON-SOLDAT



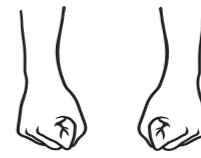
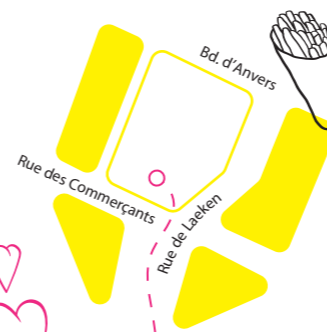
**AÏDA YANCY [FR] 14'54''**  
"Public space is segregated. What statues do we have? Us, women? Us, people of colour? Where is our statue of Lumumba?"



RUE DES  
COMMERÇANTS 23



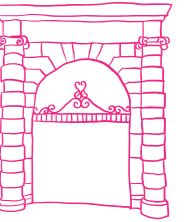
**QUINN [EN] 16'44''**  
"I can't imagine what it must feel like to be considered a nuisance. I can't imagine what it's like to not have any papers. I can't imagine what it's like to work for €20 per customer."



CENTRAL STATION  
PUTTERIE 21  
IN FRONT OF  
THE BUS STOP 71



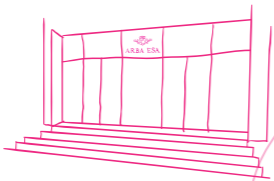
**AGATHE YAMINA [FR] 13'58''**  
"At this bus stop, I met a childhood friend who now smokes crack. What do we do with people who are just a little bit outside the norm? What do we do with them collectively?"



ACADÉMIE ROYALE  
DES BEAUX-ARTS  
RUE DU MIDI 144  
ON THE STEPS IN FRONT  
OF THE ENTRY



**L.K [FR] 14'27''**  
"School is a place of passage. So are these stairs and I love places of passage. I feel legitimate sitting here, I've soaked myself into these steps, it's a viewpoint to look at people and say hello."



METRO 1 - 5  
SAINTE-CATHERINE  
EXIT 1  
QUAI AUX BRIQUES

METRO 2 - 6  
YSER  
EXIT 3  
PORTE D'ANVERS

METRO 1 - 5  
GARE CENTRALE  
EXIT 6  
PUTTERIE

METRO 1 - 5  
GARE CENTRALE  
EXIT 6  
SQUARE DE LA PUTTERIE

METRO 2 - 6  
TRÔNE  
EXIT 1  
RUE DU LUXEMBOURG

GALERIE BORTIER\*  
RUE DE LA MADELEINE 55



**MARIAN LENS [NL] 13'11''**  
"By aging, I become more invisible and asexual. Or heterosexual. I am confronted more fiercely to social norms than I expected. I knew that I was going to be discriminated against in a world that revolves around young people. That's ageism."

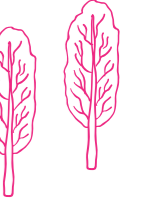
\*Galerie Bortier is open from 9am to 10:30pm, Tuesday to Saturday and from 9am to 6:30pm on Sunday.



PLACE DU TRÔNE  
IN FRONT OF THE  
LÉOPOLD II STATUE



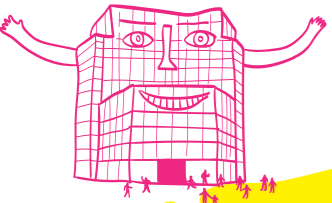
**LAURA HSENGIYUMUA [FR] 14'19''**  
"You are standing in front of a statue. The materials were extracted from the mines of Upper Katanga by slaves. This statue celebrates the person who conceived of this slavery. When I got the vision to melt this statue, it was with the idea of turning it into an urban space where people can come together and protest when needed."



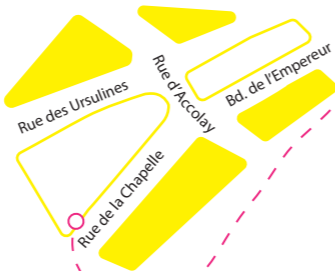
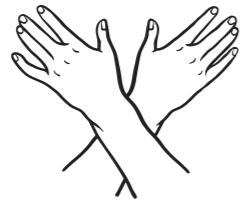
BD. LEMONNIER 216



**GAIA [FR] 12'58''**  
"Place de la Constitution: a car park and underneath a hole, too full, too empty. There's an emptiness above too: an emptiness of meaning. Above it: the Lemonnier building, like a boomerang, a lighthouse. You look at it, it looks at you. This building welcomes you."



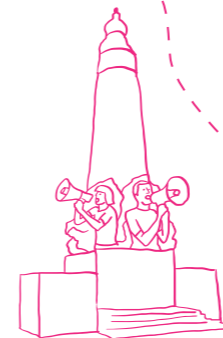
FEMME FLAMME



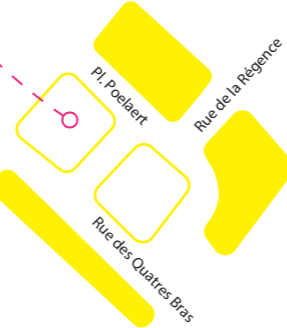
SKATEPARK  
RUE DE LA CHAPELLE



**ANNIEK SCHALIJS [NL] 13'27''**  
"Do you think sports can have a gender? Do you think skating fits men's identity better? Or do you think women can do any sport equally well?"



Police



PLACE POELAERT  
IN FRONT OF THE MONUMENT  
OF THE BELGIAN INFANTRY



**ANSO TOTOLEHIBE [EN] 15'33''**  
"I have a feeling of hate when I go there, because it really represents the opposite of me: a patriarchal institution, a big oppressive monument. So I think for queer people it is very subversive to go there to protest. With our queer bodies, our racialised bodies..."